

JJ white memorial presbyterian church

www.jjwhitememorial.org



Vol. 2010, No. 02

February 2010

2010 World Missions Conference

February 26, 27,28

**Life is
good...
share it!**

*"But do not forget to do
good and to share. For
with such sacrifices, God
is well pleased."*

Hebrews 13: 16

You are invited to join
us each and every
week for:

SUNDAY

- 9:00 a.m. Breakfast
- 9:30 a.m. Sunday School
- 10:30 a.m. Worship Service
- 5:30 p.m. Vespers

WEDNESDAY

- 7:30 a.m. Men's Breakfast
- 5:30 p.m. Fellowship supper
- 6:00 p.m. Adult, youth, and
children activities
- 6:30 p.m. Chancel choir

The theme for our 2010 Missions Conference is "Life is Good . . . Share It" Life is so good for those of us at JJW, and this conference will be our chance to share all that is good for us with others. Conference chairmen Chipper and Susan Gibbes invite you to mark your calendar NOW and **plan on being with us from Friday night through Sunday lunch.**



Dr. Ben Mathes
Expositor

We are thrilled to have Ben Mathes of Rivers of the World back for another year as Expositor. This year we have an added blessing because he is bringing a ROW contemporary, Jimmy Shafe, who works primarily in the Congo. The two will be a team to lead us through the 2010 Conference.

Our children will have the special treat of being taught about Missions by "Miss Mattie" Rials. She has wonderful plans in store for all of our children. At the Sunday Morning service, the children will be singing all the songs they learn over the week-end.



"Miss Mattie" Rials
Children's Leader

Calling all Rotarians! Friday night, we are inviting all local Rotarians to come join us for a catfish dinner and hear Ben Mathes, a many-time Paul Harris Fellow and Honorary Rotarian, speak about all Rotary has done for him...and what Rotarian "missions" he has been involved with. (It will "count" as a Rotary meeting.)

Tickets for the "all you can eat" fried catfish dinner are \$10 per person. Tickets available in advance at church office, or through Rotarians Margy Wicker and Nathan Wells.

Our Saturday work project will be a construction project to assist St. Andrews Mission with their work on their acquisition of Lott Furniture Building downtown.

Sign up to pray for the Missions Conference. Libby Simo is circulating Annual Prayer Chain chart—24 hours of non-stop prayer in 15 minutes segments.

Wear it and start a conversation with everyone you meet. Meredith Singley has designed a special JJWMPC t-shirt: **Life is good...share it!**

Please pre-order so we will have an idea of how many to have on hand by Missions Conference. (Short-sleeved/\$10, Long-sleeved/\$12, add \$1 for XXL shirts.)
Call Meredith 601-248-7958.

Life is good...share it!

"But do not forget to do good and to share. For with such sacrifices, God is well pleased."

Hebrews 13: 16

J. J. White Memorial Presbyterian Church

2010 World Missions Conference Schedule

Friday, February 26th

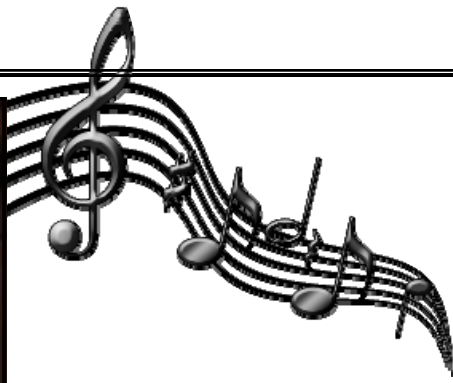
- 5:30 Nursery Opens
- 6:00 Opening Dinner Session (All Rotarians & Spouses Invited) with Ben Mathes
- 6:30 Children's Activities with Miss Mattie

Saturday, February 27th

- 8:00 Breakfast with Jimmy Shafe speaking
- 9:00 Super Saturday Work Project at St. Andrews Mission
- 5:30 Nursery Opens
- 6:00 Dinner with Ben Mathes speaking
- 6:30 Children's Activities with Miss Mattie

Sunday, February 28th

- 9:00 Nursery Opens
- 9:00 Breakfast
- 9:30 Adult Combined Sunday School with Jimmy Shafe speaking
- 9:30 Children's Sunday School with Miss Mattie
- 10:30 Worship Service with Ben Mathes providing the sermon
Special Music by Miss Mattie and the children
- 11:30 Closing Luncheon Session



Music Notes from Director Roger Nickerson

Beginning the New Year with a few biographies of famous and maybe not so famous musicians. . .

DAVID, THE MUSICIAN!

(Part 1)

In Samuel 16, we find an almost perfect description of what a Church musician should be.

WE read in the beginning of the chapter that when an evil spirit came upon Saul, he called his servants to bring him a man who could play music so that he might be healed. Immediately the servants mentioned David, a person whom they had heard was a fine musician and a valiant man.

The actual description of David from verse 16 is: "He is cunning in playing and a might valiant man, and a man of war and prudent in matters, and a comely person, and the Lord is with him."

A FINE REPUTATION

The first important characteristic of the musician David was that he had a fine reputation, not only as a musician but as a person. People heard of his skills at playing the harp and the word had spread throughout the land. It suggests that his music possessed a quality that impressed people and communicated something to them.

A SKILLED PLAYER

His description says that he was a cunning player. We translate this to be clever, with natural musical gifts and a refined skill in performance. Cleverness also connotes a good use of the mind in our playing, much thought given to style, technique and interpretation. It is a performance that communicates with people and draws them into an experience of heart and soul. It is musical excellence that makes people remember and pass on the word to others.

HIGH STANDARDS AND VISION

David was a valiant man, a strong man and one of worth. To be valiant suggests a courageous person, one who had high standards and visions, forthright and honest in all his dealings. To have these characteristics as a musician would bring about respect and admiration for us as people and serve an undergirding to the music which he makes.

PART II: DAVID IN THE CONTEMPORARY CHURCH...next month.

NEW! JJW MPC Concert Series

First Concert

Sunday, March 7

7:15 p.m.

J. J. White Memorial Presbyterian Church

Beginning March 2010, J. J. White Memorial Presbyterian Church will host a community-wide concert on the first (unless otherwise noted) Sunday evening of each month featuring sacred and secular musicians from Pike and surrounding counties.

A love offering will be taken to directly benefit performers. No Vespers service on concert evenings.

A amazing variety of performance will be featured. Watch the Community Calendar in the Enterprise Journal and the JJW News for upcoming concerts...Blue Grass, Acoustic Folk, Sacred Choral, Gospel, Keyboard.....

ELDERS

Ordination and Installation of Class of 2012



Left to right: Sharon White, Renee Belote, Phil Terrell, Rev. Elizabeth Gabbard, Noggin Wild.

Sharon White was ordained as an elder by J. J. White Memorial Presbyterian Church on Sunday, January 10, 2010. She has been a member of JJWMPC for over ten years, and has been active in many fellowship and congregational care activities. Sharon lives in Liberty with her husband, Cliff White, and works at both Japonica Gallery and the Pike County Arts Council in McComb.

Renee Belote was installed as an active elder by J. J. White Memorial Presbyterian Church on Sunday, January 10, 2010. She has been a member of JJWMPC for over 30 years and has previously served on the Session. Renee actively participates in congregational care and Christian education of the church, while also serving as a community volunteer. She lives in Summit with her husband, Mike Belote.

Phil Terrell was installed as an active elder by J. J. White Memorial Presbyterian Church on Sunday, January 10, 2010. Phil has been a member of JJWMPC for more than 20 years and has previously served on the Session. He has long been actively involved with missions—particularly in Mexico and Belize. Phil lives in McComb with his wife, Liz Terrell, and is employed with Kellwood.

THE SESSION of JJWMPC is composed of members elected by the congregation each year (three per year) who each serve three consecutive years.

Class of 2010	Class of 2011	Class of 2012
Bill Mitchell Christian Education	Chip Gibbes Property	Renee Belote Fellowship
Whitney Rawlings Treasurer	Tommy Ratcliff Government	Phil Terrell Missions
Ron Yates Congregational Care	Susan White Worship	Sharon White Evangelism/Outreach
	Noggin Wild Clerk of Session	

MISSIONS...Haiti...

January 14, 2010

To the Council of the Presbytery of Mississippi
Re: Haitian Earthquake Crisis

The grave situation in Haiti has brought great sorrow and concern to us all. We in the Presbytery of Mississippi can share the pain of the victims of this tragedy better than most because of our Katrina experience.

While our natural inclination is to jump in and do something at once, this very experience has taught us that our effectiveness will be greater if we wait until the situation there stabilizes somewhat. The First Responder groups are getting their assets in place to conduct a national triage in short order. The immediate need which we can now fulfill is PRAYER. In days to come, other avenues to help will be opened for us.

We propose that the Mission Committee of the presbytery take the lead in planning future relief efforts. We do not yet know if this will involve sending teams from Mississippi but that is indeed a possibility. **In the meantime, we will be in close contact with Presbyterian Disaster Assistance, Presbyterian Hunger Program, The Outreach Foundation, Living Waters for the World and other sister organization. We will keep in touch with you and ask for your comments and input.**

Specific prayer needs at this time are for

- Mark and Jenny Hare, PC(USA) missionaries in Haiti
- The family in Haiti of Lionel Derenoncourt, staff member of the Presbyterian Hunger Program

We close with a prayer offered by our national leadership.

Grace and peace to all,

Betsy Lipscomb
Mission Committee Moderator

George T. Bates
Mission Committee Moderator-Elect

WE PRAY FOR HAITI

Brothers and Sisters in Christ,
As the eyes of the world turn to
Haiti, let us join our hearts in
prayer.

God of compassion
Please watch over the people of
Haiti,
And weave out of these terrible
happenings
Wonders of goodness and grace.

Surround those who have been af-
fected by tragedy
With a sense of your present love,
And hold them in faith.

Though they are lost in grief,
May they find you and be com-
forted.

Guide us as a church
To find ways of providing assis-
tance
That heals wounds and provides
hope.

Help us to remember that when
one of your children suffers
We all suffer.

Through Jesus Christ who was
dead, but lives and rules this world
with you.

Amen.

2010

Upcoming Events

FEB

7

Souper Bowl Sunday

Lunch and Congregational Meeting in Fellowship Hall following Morning Worship Service. Bring canned goods or donation for MICA.

Boy Scout Sunday

Open house and dedication of Schroeder house

12—13

Kaleidoscope

A delightful learning experience with other leaders, teachers, and musicians in the Presbytery of MS. First Trinity Presbyterian Church, Laurel, MS

17

Ash Wednesday

6:00 p.m. Service in the Sanctuary

26—28

Missions Conference

Rev. Ben Mathes, Expositor
Miss Mattie Rials, Special activities for children

MAR

7

JJWMPC Concert Series

7:15 p.m.

APR

11

JJWMPC Concert Series

7:15 p.m.

22—25

Cursillo

Paul B. Johnson State Park near Hattiesburg



JJWMPC group attending PW Winter Retreat

Front, left to right:

Dana Lamar, Elizabeth Gabbard, Dixie Fouche.

Back, left to right:

Carolyn Ray, Phyllis Waller (Dixie's sister), Renee Belote, Chetta Hitt, Mary Ann Ratcliff, Berde Nickerson, Carol Wood.

The PW Winter Retreat....

was held January 22—23, 2010, at St. Mary of the Pines in Chatawa, MS. Approximately 55 women from across the Presbytery of Mississippi attended this annual event.

Leaders this year were Dr. Dana Lamar, former organist at JJWMPC, and Rev. Elizabeth Gabbard, our pastor. The theme was: **Singing the Faith—the Music That Enhances our Worship**

“We started with the historical perspective, discussing the role music has played in Christian worship throughout the years. We also discussed hymnology and theology, how service music gets chosen, personal hymn preferences, and the future of music in the church. We tried to sing as many songs as possible and be diverse when doing so. We also worshipped together,” said Rev. Gabbard.

Meditations by Rev. Elizabeth Gabbard

“From ages past no one has heard, no ear has perceived, no eye has seen any God besides you, who works for those who wait for him. You meet those who gladly do right, those who remember you in your ways.”
Isaiah 64:4-5a

I cannot begin to tell you how excited I am about life at JJ White Memorial Presbyterian Church! I know that this is a place where the Holy Spirit is at work; I can tell that God is working in and through our lives as we worship the Lord together. And recently, God has shown me once again how he is moving through us, molding us to be the people of God. On Saturday, January 16th the session met for a retreat. We conducted our regular business meeting; we ate together and had a chance to visit. But we also had a chance to look towards our future. The Rev. Clarissa Youngblood-Fuentes was here to lead us through some visioning and planning exercises (and wasn't her sermon, "What's In Your Basket?" wonderful on Sunday!). I must tell you how overwhelmed I am by God's plans for us.



Rev. Elizabeth Gabbard and Rev. Clarissa Youngblood-Fuentes

Wednesday Evening Adult Studies 6:00 p.m.

FEB	
3	The Ministry of Hospitality
10	Introduction to Lent
17	Ash Wednesday Service
24	The Lenten Journey
MAR	
3, 10, 17, 24, 31	The Lenten Journey

The function of the planning exercise was to look at the resources that we already have and think of new and creative ways to use them in the future. The first thing Clarissa asked us to do was to dream: what would JJ White look like in a perfect world? How would we use the gifts we have? What impact would we make on the community around us? How would God use us to change lives? Let me tell you, our session is blessed with the ability to dream big! The prophet Isaiah tells us that our dreams cannot even begin to compare to the reality that God has planned for us; so if we dream big, how much grander will God's reality for us be? How wonderful!

By the end of the day, we decided that God is calling us to work in three specific areas right now:

- 1. The formation of small groups.**
- 2. To find new and creative ways to use our facilities for the building up of God's kingdom.**
- 3. To encourage and equip our young adults for leadership roles in the Church**

So I hope that as 2010 progresses, you will keep these three goals in your hearts and in your prayers because God will be using all of us to do his work. God remembers those who seek to build up his kingdom, and he will bless our efforts. Be on the lookout for more information to come about programs and events that will encourage these three areas of growth. I pray that God will bless you all as individuals and families, just as I pray God will bless us as a church family that is seeking to be faithful to the Living God.

Rev. Elizabeth Gabbard

THOSE WHO SERVE IN FEBRUARY



**USHER/GREETER
TEAM**

Tommy Ratcliff, Captain
 John Drummond
 Stacey Moak
 Johnny Nance
 Mark Statham

FLOWERS

7 Bill Jones
 14 D/M W. M. Kennedy
 21 Loreice Naklie
 28 M/M Jim McElwee

FEBRUARY BIRTHDAYS

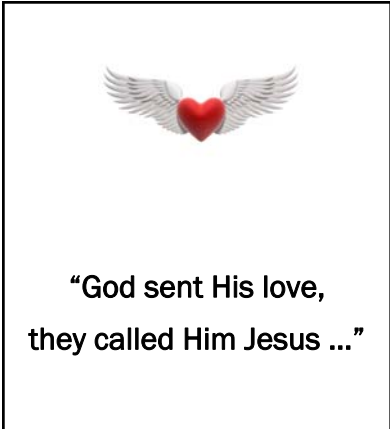
2 (Jennifer Brill)
 13 Emily Austin
 14 (Roger Price)
 20 Donna Smith
 20 Susan F. Gibbes
 21 Margaret Ann Morgan
 21 Sam White
 22 Hannah Catchings
 23 Lillian White
 24 Lucille Bleckley

MARCH BIRTHDAYS

4 (Judy Deer)
 5 Flo Boyd
 6 Natalie Simo
 8 Jim McElwee
 11 (Charles Ray)
 Jimmy Robinson
 12 Dolores Duczer
 15 Angie Simmons
 Randy White
 23 Betty Penick
 25 Dixie Fouche'
 29 Iddo Enochs
 Karen Sanders
 31 Mary Lucile James

**MEN'S WEDNESDAY
BREAKFAST GROUP**

3 Steve Blue,
 Tom Dupree,
 David Kimble
 10 Whitney Rawlings,
 Jimmy C. Robertson
 17 John Drummond,
 Randy White
 24 Noggin Wild,
 Tommy Ratcliff



ELDER of the MONTH

RENEE BELOTE
 249-0780 or 249-9463
 reneeelote@cableone.net

**Continental Breakfast
& Fellowship
each Sunday at 9:00 a.m.**

7 Renee Belote
 14 Bill Mitchell
 21 Suzi Drummond
 28 Sharon White

**CHILDREN'S
CHURCH**

7 Angie Simmons
 14 Billie Nance
 21 Susan Gibbes
 28 Linda Miller

We extend our deepest sympathy...

To the family and friends of the mother of Wayne Hutchison, Mrs. Christine Hutchison, who passed on to glory January 20, 2010.

To the family and friends of Edna Thibodeaux' sister, Miss Cassie Tucker, who passed on to glory January 19, 2010.

To the family and friends of our long-time member, Mrs. Maxene Williford, who passed on to glory January 31, 2010.

Presbyterian Women

Night Circle will meet Monday, February 8, at 6:00 p.m. with Dixie Fouche .

Day Circle will meet Tuesday, February 9, at 12 noon in the fellowship hall.



The Faith and Fiction Book Club for Women
will meet at Centenary UMC on Thursday,
February 4, from 7-8:30 p.m. to discuss
The 19th Wife by David Ebershoff

Do You Have News?

Please contact Beth Wild to include news or pictures in upcoming issues of the JJW Newsletter.

Beth Wild

601-551-6319

bwild@bellsouth.net

February 2010

Sun	Mon	Tue	Wed	Thu	Fri	Sat
	<i>1</i>	<i>2</i> 1 p.m. New Knitters	<i>3</i> 7:30 a.m. Men's B;fast 5:30 Supper 6:00 Adult Study, Children, Nursery 6:30 Chancel Choir	<i>4</i> 7 p.m. Knutty Knitters	<i>5</i>	<i>6</i>
<i>7</i> Communion Souper Bowl Luncheon and Annual Congregational Meeting	<i>8</i> 6:00 p.m. PW Night Circle meets at home of Dixie Fouche.	<i>9</i> 12 Noon P. W. Day Circle 1 p.m. New Knitters 6 p.m. Session meets	<i>10</i> 7:30 a.m. Men's B;fast 5:30 Supper 6:00 Adult Study, Children, Nursery 6:30 Chancel Choir	<i>11</i> 7 p.m. Knutty Knitters	<i>12</i> Kaleidoscope	<i>13</i> Kaleidoscope
<i>14</i> 9:00 Refreshments 9:30 Sun. School 10:30 Worship 5:30 Vespers	<i>15</i> 3 p.m. Nursing Home visitation	<i>16</i> 1 p.m. New Knitters	<i>17</i> Ash Wednesday 7:30 am Men's B'fast 5:30 p.m. Supper 6:00 p.m. Worship 6:30 p.m. Choir	<i>18</i> 7 p.m. Knutty Knitters	<i>19</i>	<i>20</i>
<i>21</i> 9:00 Refreshments 9:30 Sun. School 10:30 Worship 5:30 Vespers	<i>22</i>	<i>23</i> 1 p.m. New Knitters	<i>24</i> 7:30 a.m. Men's B;fast 5:30 Supper 6:00 Adult Study, Children, Nursery 6:30 Chancel Choir	<i>25</i> 7 p.m. Knutty Knitters	<i>26</i> Missions	<i>27</i> Conference
<i>28</i> Missions Conf. 9:00 Refreshments 9:30 Sun. School 10:30 Worship 12:00 Luncheon	<i>God is</i>					



CHURCH STAFF

Pastor	Rev. Elizabeth Gabbard
Music Director	Dr. Roger Nickerson
Organist	Mr. Roger Price
Secretary	Mrs. Judy Deer
Treasurer	Mr. Whitney Rawlings
Janitors	Mrs. Lannette Williams, Mrs. Deborah Lee
Nursery	Mrs. Pat Bates, Mrs. Lynda Young

THE SESSION:

Renee Belote, Chip Gibbes, Bill Mitchell, , Tommy Ratcliff, Phil Terrell,
Whitney Rawlings, Sharon White, Susan White, Noggin Wild, Ron Yates.

J. J. White Memorial Presbyterian Church

February Issue 2 Volume 2010

110 Third Street McComb, MS 39648

P. O. Box 774 McComb, MS 39649

E-mail: jjwhitememorial@bellsouth.net

Phone: (601) 684-4189 FAX: (601) 684-4199

Website: www.jjwhitememorial.org